

## Major Medical Research Institute deploys Atempo solutions

ee

*"Atempo facilitates a robust strategy for data growth which other solutions were unable to offer."*

99

Research Institute Solution Architect, UK

### THE COMPANY

Atempo's UK customer is a **medical research institute** with unstructured data sets currently in excess of **200 terabytes** and showing phenomenal growth rates.

Each month, research projects generate millions of very small files and many voluminous high resolution images and videos which need **backing up** and **archiving**.

### THE CHALLENGE

The challenge faced by the Institute's Solution Architect was to ensure she had **backup storage** which could scale with primary storage requirements.

The Institute uses a wide variety of operating systems, data sources, file types and file access control lists. **Data protection** must run smoothly and maintain full integrity and the quality and performance of each backup is equally important.

ee

*"Tina is an excellent data protection system which is scalable and sustainable."*

Research Institute Solution Architect, UK

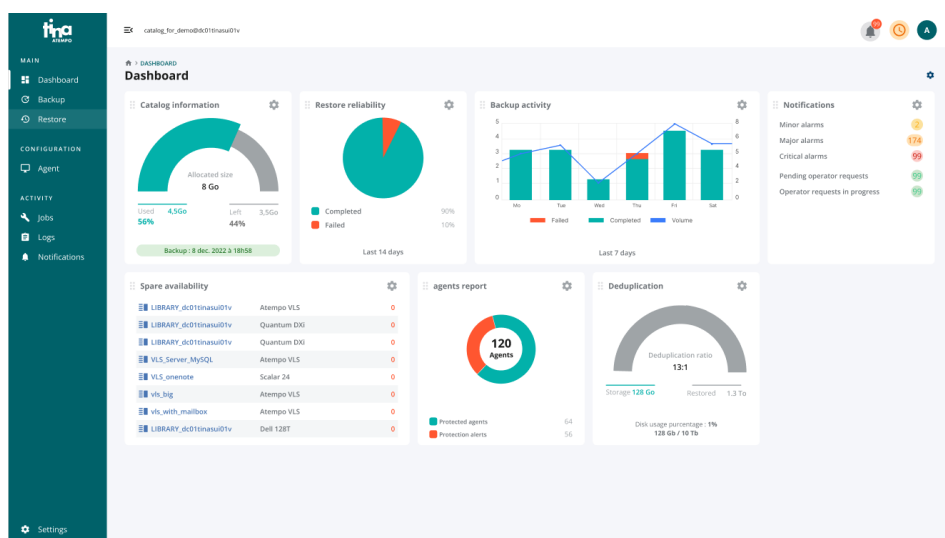
99

## THE SOLUTION

The research institute chose to deploy Tina, an Atempo solution, to ensure the initial brief was respected:

- Atempo Tina using the backup protocol NDMP to ensure **backup consistency** and providing deduplication rates of almost 60%.

Backed-up data is currently stored on LT06 tapes with a future upgrade to higher volume LT07 or LT08 tapes fully supported by Tina.



## BUSINESS BENEFITS



Native tape support



Free up bandwidth  
for the organization



Reliability and scalability

## Consult the Datasheet

<https://links.atempo.com/DP-datasheet>

## Contact an Atempo expert

<https://links.atempo.com/DP-contact-us>

Update: 16/03/2023

POWERFUL DATA PROTECTION AND DATA MANAGEMENT SOLUTIONS - [atempo.com](https://atempo.com)

Atempo Headquarters | 23, Avenue Carnot, 91300 Massy, France | Tel: +33 164 868 300 | [info@atempo.com](mailto:info@atempo.com)

## THE RESULT

The customer has also chosen to deploy at **Atempo Lina** for a laptop protection solution initially for one hundred machines, and **Miria Archiving**.

**Miria Archiving** and **Tina** are **complementary**. Both solutions ensure data is **backed up** and **archived** in a suitably **secure environment**. Data growth is manageable because full scalability is a core solution feature.

And because Atempo is entering an exciting phase of convergence for its range of solutions, life will become even simpler for the **storage and backup admins**. Other yet uncharted territory could see **Miria Archiving** and **Tina** protecting some or all of the institute's virtual machine pool.



**tina**  
ATEMPO