



# Tina and Lina protect health data at Jury Hospital



*"Today, we need to do more with increasingly restricted budgets. We can use the entire solution without restrictions at a very reasonable cost. This allows us to quickly install a backup agent on a new server"*

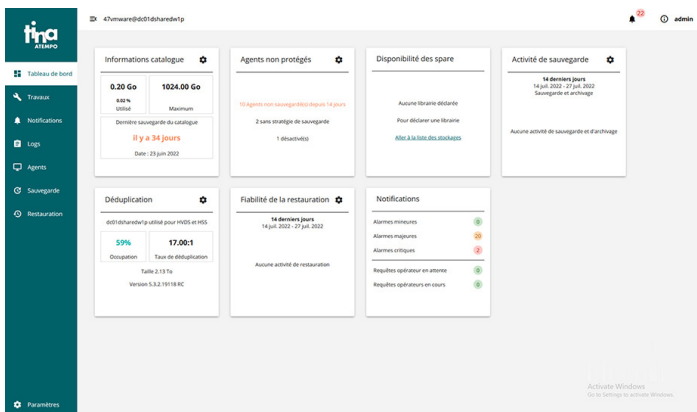


Gérald Piechocki, Project Manager, IT Systems Department of Jury Hospital.

## JURY HOSPITAL

Located near Metz in Eastern France, **Jury Hospital** is a specialized center for persons with psychological or addictive disorders. Since 2014, the hospital has joined forces with the Lorquin Hospital Center to create a common management structure.

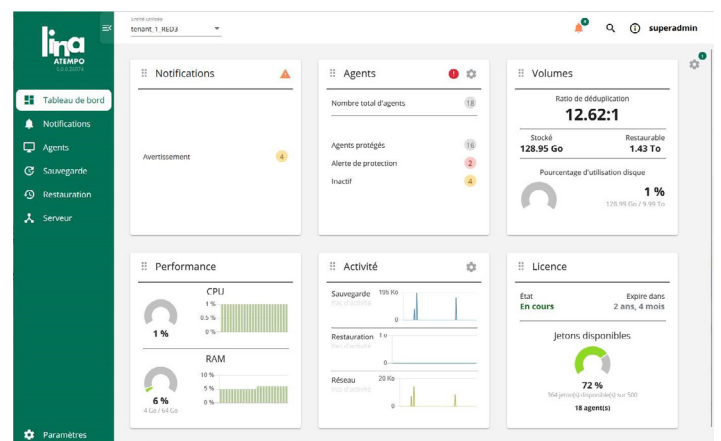
Jury Hospital employs nearly 700 non-medical staff, and about 60 medical professionals to handle more than 170 beds, with 22 extra-hospital structures. A small team of four staff members are in charge of the hospital's IT systems.



## THE CHALLENGE

Gérald Piechocki, Project Manager at Jury Hospital, expressed interest in **Tina, Atempo's Data Protection solution**, to equip its virtualized infrastructure with a **high-performance backup solution** that would address the increasing volume of data. Previously, backups were performed via scripts launched at night to preserve databases on tape. The critical data to be backed up includes Dedalus Hexagon databases as well as various other professional applications.

*"We've never had to bring back a full server, but thanks to the simplicity of Tina's interface, restoring a file or directory takes only a few minutes"* explains Gérald Piechocki.



**"Atempo allows us to compensate for the loss of budgetary resources.**

*The price policy, based on licensing by number of beds, is a real advantage."*

Gérald Piechocki, Project Manager, IT Systems Department of Jury Hospital.



## THE SOLUTION

Since Tina was deployed, 60 backup processes have been **automated** and activated on an hourly, daily or weekly basis.

“Depending on the criticality of the application, we must be able to roll back to a backup of one hour maximum on some applications. Today, we back up all of our data, without exception. The entire infrastructure is virtualized, all the VMware VMDKs are backed up over the weekend, and during the week, these backups are also duplicated on LTO tapes.” 99  
Gérald Piechocki, Project Manager, IT Systems Department of Jury Hospital

Tina backs up the entire data of Jury Hospital which represents more than **12 TB** distributed on a **hundred virtual servers**. Data retention on disk is 10 weeks and the 24 cartridge LTO storage robot ensures three months retention on tape for VMDKs. All data is stored in two separate computer rooms. Tina restores from either storage system in exactly the same way.

### Improved continuous data protection

Since 2018, the IT team has extended the scope of Atempo's data protection solutions to include **continuous backup of desktops and laptops** for the whole organization's staff. **More than 300 workstations (Mac, Windows) are backed up by Lina**. Additionally, the deduplication of the backed up data provides a significant **cost-reduction** for storage and optimizes network performance. Lina's **intuitive interface** allows users to restore lost, misplaced, or deleted files themselves. This benefit also minimizes the workload of the IT team.

## BUSINESS BENEFITS



Complete virtual environment backup



Automation of disk and tape copies



Control of the IT budget

“The transition to a fully virtualized architecture provided the opportunity to establish a reliable backup process. Beyond the increase in the volume of data to be protected, we were looking to increase the backup retention periods. A full-scale test showed us Tina's usefulness in our environment.” 99  
Gérald Piechocki, Project Manager, IT Systems Department of Jury Hospital

## THE BENEFITS

- **Suitable solution** for physical and virtual environments
- **Management** of multiple backup media (LTO cartridges, disks)
- **Centralized protection** for databases and all servers
- **Continuous data protection solution** for desktop and laptop workstations on site and off site
- **User autonomy** in backup and restore of their files
- **IT cost management** with flexible pricing adapted to hospital budget



**lina**  
ATEMPO

**tina**  
ATEMPO

### Consult the Datasheet



<https://links.atempo.com/DP-datasheet>

### Contact an Atempo expert



<https://links.atempo.com/DP-contact-us>

Mise à jour : 20/04/2023