



DATA PROTECTION

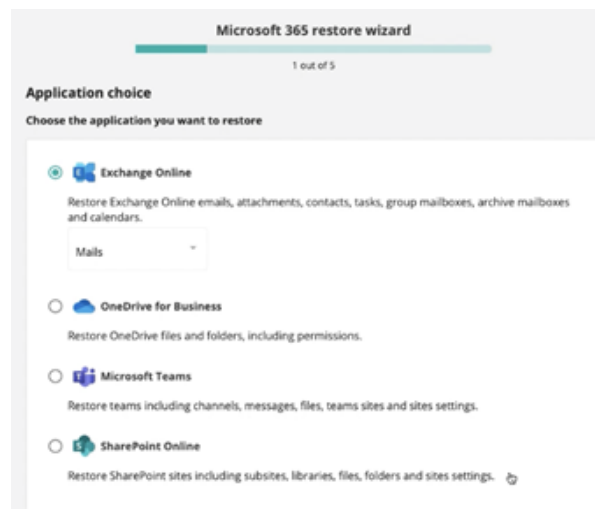
AUTOMATED PROTECTION FOR MICROSOFT 365

ATEMPO
preserving data ecosystems

Protect your M365 Datas

The Tina module for Microsoft 365 provides IT administrators with fast, reliable, and easy-to-use recovery solutions for restoring data and files stored in the cloud version of Microsoft 365. This module is fully integrated into the centralized administration interface and works in conjunction with other application modules. Administrators have the flexibility to back up to high-speed disk, deduplicated storage, tape, or even a private or public cloud.

The simple recovery interface allows administrators to restore an entire mailbox or folder, an email, or an individual file. This makes data recovery easy and efficient for the IT team.



All M365
Applications
Protected



Security
&
Compliance



Fully Automated
Protection
of Data



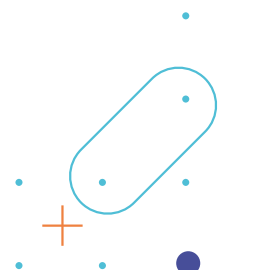
Granular
Restore

Tina's Microsoft 365 module allows for parallelization of mailbox and OneDrive folder backups, which optimizes performance and helps to keep backup windows consistent. This means that multiple mailboxes or OneDrive folders can be backed up simultaneously, rather than sequentially, which can greatly reduce the time required for backups. This can also improve overall performance and reduce the impact on system resources during the backup process.

Encryption is an important feature that helps to ensure the privacy of your Microsoft 365 emails and files. Tina offers encryption capabilities that protect your M365 data both in transit and at rest. Additionally, Tina has the ability to store your M365 data on immutable storage which means that the data cannot be modified or deleted once it has been written, providing an extra layer of security. This ensures that your M365 data is protected from unauthorized access, tampering, and deletion.

Tina's Microsoft 365 module is accessible from a web interface, which allows for easy scheduling and control of operations. The administrator can manage their M365 backups alongside their other backups in one centralized location. For shorter recovery point objectives (RPOs), OneDrive folder and email protection can be scheduled as frequently as every 5 minutes, ensuring that the most recent data is always available for recovery. This provides flexibility and control for the IT team to meet their specific data protection needs.

Sync and restore with ease. Even deleted emails, files or folders are available for quick and easy restoration. Localization via the built-in search engine allows direct access to files or messages by sender, subject, carbon copy (cc), and more.



Main Features and Benefits



Microsoft 365 Protection

- Exchange
- OneDrive
- OneNote
- SharePoint
- Teams

- Take back control and perform backups according to your company's policy (ability to backup every 5 minutes)
- Save backups to disk, deduplicated appliance, tape or cloud storage



All-in-One Solution

- A single solution meets all enterprise data protection needs
- The M365 module is integrated into the Tina interface and requires no additional installation



Granular Restoration

- Granular restoration of files, folders, emails and mailboxes
- For quick restoration, search for objects by name. For emails, search by criteria such as «sender», «cc», «subject», etc.



Intuitive Restoration

- 3-click restore to recover emails and files to their original location or to a new location
- View deleted Microsoft 365 objects, simply select the ones you want to restore



Security and Compliance

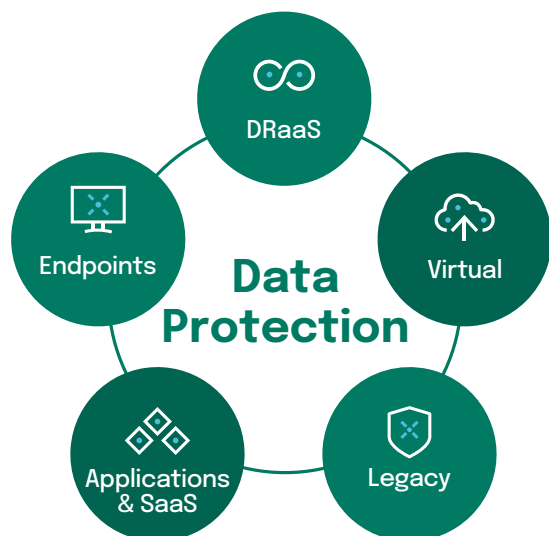
- Encrypt your data and meet strict regulatory requirements
- Manage the data retention period to comply with current regulations



Optimized backup

- Faster backup by protecting multiple folders or mailboxes of your choice simultaneously
- Faster configuration via the backup wizard which allows you to set up several boxes at once

The Five Pillar Of Data Protection



DRaaS

Backup continuity with 0 data loss and 0 business disruption



Virtual Servers

Protect virtual environments with immutable backup copies



Physical servers

Protect all your physical servers and extend the data protection for your legacy systems



Apps & SaaS

Backup and restore all your apps and Microsoft 365 data Exchange, OneDrive, Sharepoint, Teams & OneNote



Endpoints

Continuous and deduplicated Data protection for all workstations. Autonomous and easy to use data restore

Stockages Compatibles



<https://www.atempo.com/resources>

Contact an Atempo Expert



<https://links.atempo.com/DP-contact-us>

Mise à jour : 27/02/2023

POWERFUL DATA PROTECTION AND DATA MANAGEMENT SOLUTIONS - [atempo.com](https://www.atempo.com)

Atempo Headquarters | 23, Avenue Carnot, 91300 Massy, France | Tel: +33 164 868 300 | info@atempo.com

