



## Major energy company Trident Energy uses Tina to protect its data

66

*"Tina ticks many boxes thanks to its versatility. It can protect so many different workflows. Microsoft 365 which is essential of course but also our VMs, our legacy systems and applications. When you factor in the quality of services from Atempo, the return on our investment is really first rate."*

99

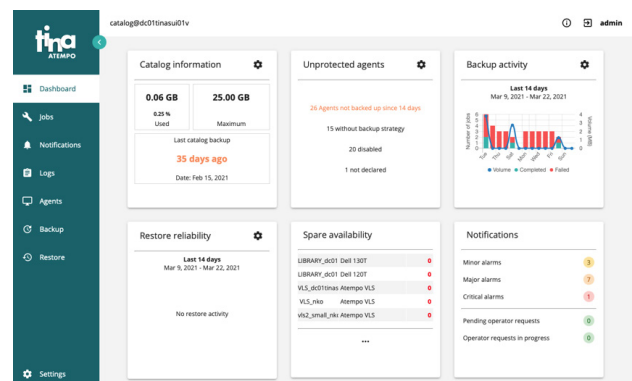
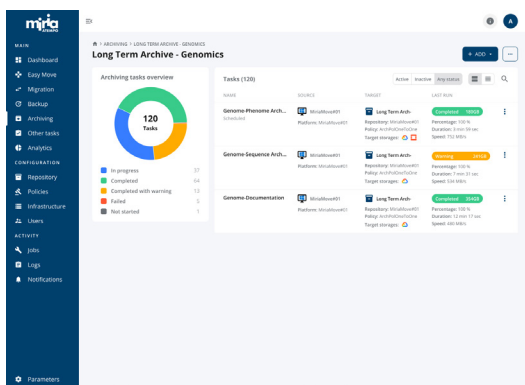
Kevin Turnbull, IT Manager, Trident Energy, London, UK.

### THE ORGANIZATION

**Trident Energy** is an international company focused on the acquisition, operation and optimization of international mid-life oil and gas assets. Trident Energy is present, notably in Africa and Latin America.

As a company focused on redeveloping mid-life oil and gas assets, they need to **manage legacy applications and modernize the existing IT infrastructure** of acquired platforms step by step.

Diverse operational locations along with **vast amounts of critical data** and **applications** mean Trident needs efficient, robust, and secure IT systems. We met up with Kevin Turnbull, IT Manager at Trident and Atempo's Northern European Director, Christophe Darras to talk about data management. Trident have just finished installing **Atempo's data protection and migration solutions** on Brazilian oil rigs. Prior to that, the solution was rolled out at the London locations.



66

**"Atempo pushed relentlessly with our teams to make this project a success."**

*"There were considerable complexities to be managed on the London installation and Atempo's teams set out to make everything work. They often went way beyond the call of duty. I know this is not the type of service we would have got from the competition! I see Atempo teams as an extension of my own teams and for us, this is priceless."*

Kevin Turnbull, IT Manager, Trident Energy, London, UK.

99

## DATA PROTECTION CHALLENGES

Trident Energy has multiple IT protection needs for their global infrastructures and critical industry applications including:

- **Backup capacity for about ten VMs and Microsoft 365** components,
- **Ongoing protection for legacy applications** based on older Windows Servers and SQL Servers,
- **IT infrastructure management** in the UK but also on oil rigs and installations in Brazil and Africa with a high level of support and flexibility,

And all this at a **reasonable cost**.

Trident deployed **Atempo Tina** to protect their critical Microsoft 365 applications and VM's. Tina also clearly stood out from the competition when it came to **protecting specific critical applications** running on the oil rigs deployed and running on **older Windows OS or SQL Servers**.

Because of Trident's specific environment, the installation turned out to be complex and required a genuine **collaboration** between Atempo and Trident technical teams to understand and implement every aspect of the solution. This meant talking with **Atempo Professional Service and R&D teams** to ensure all components were working optimally.

66 In Kevin's words: *"Tina ticks many boxes thanks to its versatility. It can protect so many different workflows. Microsoft 365 which is essential of course but also our VMs, our legacy systems and applications. When you factor in the quality of services from Atempo, the return on our investment is really first rate."* 99

## DATA MANAGEMENT CHALLENGES

Trident also recently acquired a new Qumulo file server cluster. Kevin saw the importance of finding a solution in the market that can natively plug in to **Qumulo** and **back up Trident's seismic data safely and securely**.

And because Atempo provides data management solutions recognized by Qumulo, it did not take long to position **Atempo Miria** for Trident's storage protection needs. Miria has the capacity to handle backup requirements often in excess of **300TB per day**.

## BUSINESS BENEFITS



All applications backed up by a single solution: VM, M365, Business applications



Local technical teams for a simplified deployment



A single license for the protection of all types of data

## Consult the Datasheet

<https://links.atempo.com/DP-datasheet>

<https://links.atempo.com/DM-datasheet>

## Contact an Atempo expert

<https://links.atempo.com/DP-contact-us>

<https://links.atempo.com/DM-contact-us>

Update: 04/09/2024

POWERFUL DATA PROTECTION AND DATA MANAGEMENT SOLUTIONS - [atempo.com](https://atempo.com)

Atempo Headquarters | 23, Avenue Carnot, 91300 Massy, France | Tel: +33 164 868 300 | [info@atempo.com](mailto:info@atempo.com)

## BENEFITS

- **Proximity** and **attentiveness** of the Atempo teams
- Data protection capacity in a complex, **multi-site environment**
- Protection of the entire **M365 perimeter**
- **Rapid and adapted** deployment
- A solution for the **complete protection** of applications and business data
- Support for the **migration of large volumes of data**

