



lina
ATEMPO

ATEMPO
preserving data ecosystems

ALL-IN-ONE PROTECTION FOR YOUR DESKTOPS AND LAPTOPS

The best defense against theft, cyberattacks, damage and data loss

+255%
growth in ransomware attacks in 2020

A laptop stolen every

53s

75%
75% of ransomware victims are SMEs

In 2020, there was one ransomware attack every

10s

The real cost of losing a computer is estimated at

\$49 000 €

PREOCCUPATIONS OF IT MANAGERS:

- How long does it take to restore a laptop following a cyberattack?
- Will my backup enable me to reconstruct a lost or stolen laptop?
- How can I enable my users to manage their own data recovery jobs?
- Backup on one side, Disaster Recovery on the other, how do I manage associated data storage volumes to avoid additional costs?



Continuous backup everywhere



Restore from any destination from a browser in complete security



Empower users to restore data by themselves



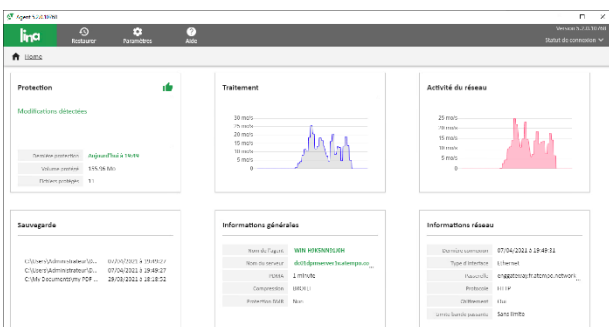
Completely rebuild a machine (system + data)



Reduce the volume of stored data



Protect without impacting the user



Nantes Université

Guillaume Avez,
Technical Manager of the
Networks and Servers Division

"We were looking for a scalable backup solution for our endpoint machines that would handle the constant increase in our research data and enable our users to restore their data in complete autonomy. Lina has ticked all our boxes and provides genuine peace of mind amid our intensive daily that are so often hectic."

CUSTOMER USE CASES:

- Laptop backups used by remote workers (technicians, sales...)
- Workstation backups on remote sites connected over reduced bandwidth
- Laptop backups over Wifi on company premises
- Protection of departmental file servers
- Autonomous user restore
- Search function for historical backup versions
- Complete machine rebuild (system and content) from the backup server

THE POWER OF LINA:

Reliable and powerful protection
Because file protection only makes sense if it is continuous and for all: Lina enables users to retrieve any backed-up file version at any moment.

Express deployment on the machines to protect
Less than 5 minutes to install on a new machine and select a predefined backup policy with centralized management: the protection is up and running with remote supervision.

Users manage their own restores
Real simplicity means users need no help to recover a lost file. IT teams save time and can concentrate on other activities.

A single solution for system and file recovery

Lina associates Bare Metal Recovery (BMR) with CDP Continuous Data Protection, which captures each file modification, to enable the reinstallation of a complete machine as it was prior to the incident.

Optimized storage requirements adapted to lower bandwidth networks

Efficient deduplication runs on the source side before data blocks are sent to the backup server meaning you save on network and storage costs.



HEXATRUST
CLOUD CONFIDENCE & CYBERSECURITY

TECHNICAL CHARACTERISTICS

COMPATIBILITY	<ul style="list-style-type: none">• Workstations and file servers• Windows, macOS and Linux
HOT BACKUP	<ul style="list-style-type: none">• Block mode backup and continuous data protection (CDP) compatible with open files
INTELLIGENT STORAGE & TRANSFER	<ul style="list-style-type: none">• Source-based deduplication reduces network pressure• Deduplication on the backup server – limits the total volume of storage required for enterprise machine backups
ENCRYPTION	<ul style="list-style-type: none">• Between the protected machine and the backup server• HTTPS / SSL – Personalized certificate
CENTRALIZED MANAGEMENT	<ul style="list-style-type: none">• Backup policies• Automatic updates on client machines
FLEXIBLE RESTORE	<ul style="list-style-type: none">• Through search: name, type, date, ...• Through navigation and the identification of missing objects• Through time navigation for a version from a specific date
AGENTS AND SERVER	<ul style="list-style-type: none">• Local agent runs on laptops, desktops, and file servers• Backup server on a site accessible by agents via the network
MULTI-SITE CAPACITIES	<ul style="list-style-type: none">• Protection for groups of machines on remote sites managed from the central server• Replication of the backup server to a second site

maj: 2022/03/04

Source : <http://www.channelpronetwork.com/article/mobile-device-security-startling-statistics-data-loss-and-data-breaches/> / 2015 - **Source :** <https://fr.statista.com/statistiques/530918/experience-vol-ordinateur-portable-professionnel-salaries-france-par-taille-d-entreprise/> - **Source :** <https://www.bpifrance.fr/nos-actualites/les-cyberattaques-ont-ete-multipliees-par-4-en-2020> - **Source :** <https://www.infosecurity-magazine.com/news/one-ransomware-victim-every-10/>

POWERFUL DATA PROTECTION AND MIGRATION SOLUTIONS **ATEMPO.COM**

Atempo Paris Headquarters | 23 Avenue Carnot, 91300 MASSY | Tél: +33 164 868 300 | info@atempo.com