



## UNIFIED DATA PROTECTION SOLUTION

Software-hardware storage - Proactive monitoring  
The answer to all risks which threaten your digital data



**700M**  
cyberattacks  
worldwide



Cybercrime a cost  
**\$600** billion  
globally  
Rising to \$2 trillion in  
2021



**50%**  
of SMBs affected  
by a cyberattack in  
2018



**45%**  
by ransomware  
(Wannacry, NotPetya...)



**\$870000**  
Average cost of a  
cyberattack for an SMB

### PRINCIPAL CONCERNS OF SMB IT STAFF:

How can I rapidly implement a data protection solution?

How can I manage my budget?

Following an attack, how do I restart my critical infrastructures without waiting?

Does my backup allow me to reconstruct a machine?



Backup safely in all circumstances



Rapidly reconstruct all workstations and servers



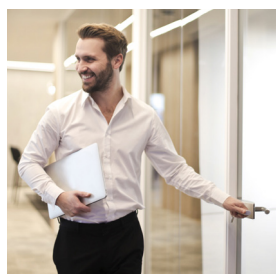
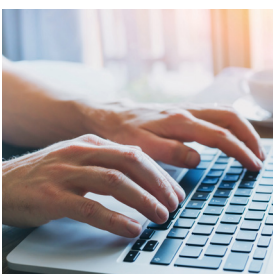
Restart business operations without delay



Protect without impacting users



Optimize backed up data storage volumes



partner stamp

## ADDITIONAL OPTIONS:

Storage in our European Data Centers (Hybrid Cloud):  
3 distinct storage points or SaaS with a backup synchronization between the appliance and the Data Center

Creation of a private cloud with a box on a secondary site (Box to Box) :

- 2 distinct storage points
- 100% local
- High storage volume
- Data redundancy
- No reliance on bandwidth availability

Replication :

- Star
- A to B, B to C, A to C etc.

## ADVANTAGES:

### Very rapid system recovery: OneKey Restore

Start a system recovery by simply inserting a USB drive even a new machine in less than 1 minute!

### Start work immediately: OneClick Restart

In the event of a serious incident, do not wait for the complete system recovery to complete before starting to work! Restart your workstation or server with a simple click from a backup version on your Backstone appliance without using another hypervisor.  
Reduce operational downtime!

### Backup Continuity Plan - BCP

The BCP ensures data backup to a secondary storage in the event of main storage unavailability. Backstone can externalize to a Cloud (European Data Centers HDS certified).

### Cyber-risk protection

The software includes an embedded proprietary protocol including versioning and encryption (AES 256) of stored data to ensure their integrity.

In the event of cyberattack, immediately restore a healthy version of your IT system.

### Preventive Monitoring Tool

Backstone includes an automatic supervision and reporting component and ensures close tracking of hard disk health.

Any technical errors are managed without any intervention on your behalf.

### File-level retrieval

Incremental delta-block file-level granularity backup.

Select the files you want to restore either as a batch or individually from any storage from any point in time.



## CHARACTERISTICS

MODEL CAPACITY	12 TB	12 TB	24 TB	36 TB	60 TB	80 TB	120 TB	260 TB
FORM FACTOR	2U		2U					4U
CPU	2 x Intel Xeon 2.4 GHz 8 cores							
RAM	16 GB DDR4 ECC			32 GB DDR4 ECC		64 GB DDR4 ECC		
HDD SYS	RAID1 2 x 240 GB SSD							RAID1 2 x 480 GB SSD
HDD DATA	RAID5 3 x 6 TB SATA		RAID6 6 x 6 TB SAS	RAID6 8 x 6 TB SAS	RAID6 12 x 6 TB SAS	RAID6 12 x 8 TB SAS	RAID6 12 x 12TB SAS	RAID6 24 x12 TB SAS

## TECHNICAL CHARACTERISTICS

### PRODUCT

<b>INTERNAL STORAGE</b>	• 12 TB to 260 TB
<b>BACKUP TYPE</b>	• Incremental forever block mode
<b>VERSIONNING</b>	• Unlimited
<b>ENCRYPTION</b>	• Yes
<b>SCHEDULING</b>	• Multi-scheduling for backup jobs
<b>COMPATIBILITY</b>	<ul style="list-style-type: none"> <li>• Windows Vista, 2008 and higher</li> <li>• macOS 10.12 and higher</li> <li>• Linux (kernel 3.2 and higher)</li> <li>• Synology DSM 6 arm and x86_64</li> </ul>
<b>FILE BACKUP</b>	• Yes (use of VSS on Windows, open file backup)
<b>BMR VOLUME BACKUP</b>	• On Windows
<b>HYPERVISOR BACKUP</b>	<ul style="list-style-type: none"> <li>• Hyper-V Virtual Machines (via Windows file backup)</li> <li>• VMware ESX Virtual Machines</li> </ul>
<b>BARE METAL RESTORE</b>	• Yes (OneKeyRestore)
<b>BACKUP SELECTION</b>	<ul style="list-style-type: none"> <li>• Shared server rules</li> <li>+ managed by agents</li> </ul>
<b>RETENTION</b>	<ul style="list-style-type: none"> <li>• Multi-strategy per agent :</li> <li>• Deleted objects kept after detecting the deletion</li> <li>• Retention based on the maximum number of versions</li> </ul>
<b>COMPRESSION ENCRYPTION</b>	<ul style="list-style-type: none"> <li>• Source-side compression by the agent</li> <li>• AES 256, zip/LZ4 encryption</li> </ul>
<b>EXTERNALIZATION</b>	<ul style="list-style-type: none"> <li>• Box to Datacenter</li> <li>• Agent to Datacenter</li> <li>• Box to Box (Master/Slave, Master/Master,...)</li> </ul>
<b>BACKUP CONTINUITY</b>	<ul style="list-style-type: none"> <li>• Agent linked to primary and secondary storage</li> <li>• If the primary storage is lost, the switch to secondary storage is automatic</li> </ul>

### SERVICES

<b>SUPPORT</b>	• Proactive
<b>ADMINISTRATION INTERFACE</b>	• Web Interface per box
<b>MONITORING REPORTING</b>	• Email incident alerts
<b>MULTI-SERVER MONITORING</b>	• Central Management Console



**260 TB**



**24 to 120 TB**



**12 TB**