



**lina**  
ATEMPO

**ATEMPO**  
preserving data ecosystems

## ALL-IN-ONE PROTECTION FOR YOUR WORKSTATIONS AND LAPTOPS

THE BEST DEFENSE AGAINST THEFT, CYBERATTACKS, DAMAGE AND DATA LOSS



**+40%**  
growth in  
ransomware  
attacks in January  
2017

A laptop stolen  
every



**52%**  
of laptop theft  
occurs in the  
workplace



**10%**  
of SMB employees  
have had their  
laptop stolen  
compared to 5% for  
large corporations



The real cost of  
losing a computer is  
estimated at

**\$49 000**

### PREOCCUPATIONS OF IT MANAGERS:

- How long does it take to restore a laptop following a cyberattack?
- Will my backup enable me to reconstruct a lost or stolen laptop?
- How can I enable my users to manage their own data recovery jobs?
- Backup on one side, Disaster Recovery on the other, how do I manage associated data storage volumes to avoid additional costs?



Continuous backup everywhere



Restore from any destination from a browser in complete security



Empower users to restore data themselves



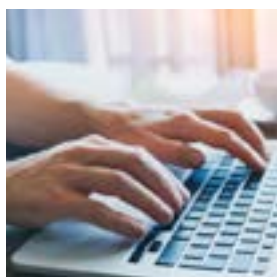
Completely rebuild a machine (system + data + applications)



Reduce the volume of stored data



Protect without impacting the user



**DUFRESNE  
CORRIGAN  
SCARLETT**  
ADVERTISING

**Julien Brevière,**  
IT Manager,  
Dufresne  
Corrigan  
Scarlett

*"If a sales person lost or damaged a laptop, we could lose contracts. With Live Navigator, I'm not worried anymore. If I know that a file was on a laptop, I have a backup ready to restore from any time and from any place."*

## CUSTOMER USE CASE EXAMPLES:

- Laptop backups used by remote workers (technicians, sales...)
- Workstation backups on remote sites connected over reduced bandwidth
- Laptop backups over Wifi on company premises
- Protection of departmental file servers
- Autonomous user restore
- Search function for historical backup versions
- Complete machine rebuild (system and content) from the backup server

## THE POWER OF LINA:

### Reliable and powerful protection

Because file protection only makes sense if it is continuous and for all: Lina enables users to retrieve any backed up file version at any moment.

### Express deployment on machines to protect

Less than 5 minutes to install on a new machine and select a predefined backup policy with centralized management: the protection is up and running with remote supervision.

### Users manage their own restores

Real simplicity means users need no help to recover a lost file. IT teams save time and can concentrate on other activities.

### A single solution for system and file recovery

Lina joins Bare Metal Recovery (BMR) with CDP Continuous Data Protection, which captures each file modification, and enables the reinstallation of a complete machine as it was prior to the incident.

### An economic backup in terms of storage requirements perfectly adapted to lower bandwidth networks

Efficient deduplication runs on the source side before data blocks are sent to the backup server meaning you economize on network and storage costs.



## TECHNICAL CHARACTERISTICS

<b>COMPATIBILITY</b>	<ul style="list-style-type: none"><li>• Workstations and file servers</li><li>• Windows, macOS and Linux</li></ul>
<b>HOT BACKUP</b>	<ul style="list-style-type: none"><li>• Block mode backup and continuous data backup (CDP) compatible with open files</li></ul>
<b>INTELLIGENT STORAGE &amp; TRANSFER</b>	<ul style="list-style-type: none"><li>• Source-based deduplication reduces network pressure</li><li>• Deduplication on the backup server – limits the total volume of storage required for enterprise machine backups</li></ul>
<b>ENCRYPTION</b>	<ul style="list-style-type: none"><li>• Between the protected machine and the backup server</li><li>• HTTPS / SSL – Personalized certificate</li></ul>
<b>CENTRALIZED MANAGEMENT</b>	<ul style="list-style-type: none"><li>• Backup policies</li><li>• Automatic updates on client machines</li></ul>
<b>FLEXIBLE RESTORE</b>	<ul style="list-style-type: none"><li>• Through search: name, type, date, ...</li><li>• Through navigation and the identification of missing objects</li><li>• Through time navigation for a version from a specific date</li></ul>
<b>AGENTS AND STORAGE</b>	<ul style="list-style-type: none"><li>• Local agent runs on the laptop, workstation and file server</li><li>• Backup server on a site accessible by clients via the network</li></ul>
<b>MULTI-SITE CAPACITIES</b>	<ul style="list-style-type: none"><li>• Protection for workstation groups on remote sites managed from the central server</li><li>• Replication of the backup server to a second site</li></ul>

Source : <http://www.channelpronetwork.com/article/mobile-device-security-startling-statistics-data-loss-and-data-breaches> / 2015 - Source : <https://fr.statista.com/statistiques/530918/experience-vol-ordinateur-portable-professionnel-salaries-france-par-taille-d-entreprise/>