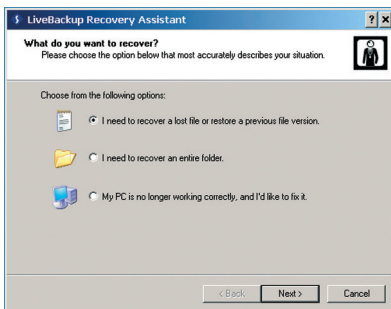


# ATEMPO LiveBackup™

## CONTINUOUS DATA PROTECTION FOR DESKTOPS AND LAPTOPS

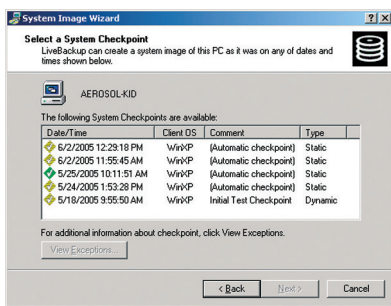
With Atempo LiveBackup, IT administrators can provide their organization with the most comprehensive data protection and recovery tools available, without increasing their department's workload. LiveBackup's client-server architecture features familiar Windows interface requiring minimal training for end users, so they can readily use the software's self-serve recovery capabilities without IT assistance.

LiveBackup's Microsoft Management Console is easy on IT administrators, enabling them to centrally manage all of a corporation's distributed data assets, simplifying restoration and other activities. LiveBackup is enterprise ready and designed to provide maximum storage for the network while maintaining complete transparency.



**Recovery Assistant**

Point and click interface makes files recovery simple



**System Image Wizard**

Create a system image to roll back to a previous state

## KEY FEATURES AND BENEFITS

- **Real Time Protection**  
CDP technology monitors files for changes and backs up data as it is saved, thus ensuring recovered data will be as recent as the last save
- **Transparency**  
Data is backed up automatically, without end-user work pattern interference or network overload
- **Disconnected State Support**  
LiveBackup protects PC data in a disconnected state, backing up laptops even while they're roaming
- **Central Management**  
Administrators can enforce consistent backup policies across the WAN and can control features available to individual users
- **Remote Administration**  
Using the Microsoft Management Console interface, administrators can remotely repair malfunctioning systems
- **Self-Serve File Recovery**  
Users can recover their own files without the help from IT staff, lowering TCO and improving productivity
- **System Rollback**  
Versioning capability allows malfunctioning systems to be easily restored without time-consuming troubleshooting
- **True Bare-Metal Disaster Recovery**  
Lost, stolen or unbootable PCs and laptops can be completely restored without the need to reinstall the operating systems and applications; the procedure takes only hours (vs. days)
- **Enterprise Ready**  
Data compression and redundant file elimination increase storage efficiency and minimizes impact on network bandwidth

# ATEMPO LiveBackup™

## LIVEBACKUP HIGHLIGHTS

### Transparent Continuous Data Protection

LiveBackup offers Continuous Data Protection and acts transparently in the back-end of your end-users PCs. The end-user does not have to worry about anything while his/her critical data is being backed up. There is no need anymore for scheduled backups of your desktops and laptops. LiveBackup runs silently and catches all the changes while they occur and send them to the backup server. On top of that, the data is also protected even when the machine is not connected to the network. LiveBackup is finally able to track and backup hard-to-protect outlook inboxes.

### Seamless Data Recovery

LiveBackup gives you the assurance that you can restore any data as recent as the last save. It also gives you the ability to roll back an entire system to a "good" state in hours. The end-user's self-serve restore capability lightens IT loads and minimizes downtimes, lowering TCO and improving productivity.

### Central Administration & Easy Management

LiveBackup enables you to centrally manage all backed up data from local desktop, remote desktops and laptops. The impact on the network bandwidth is minimized using data compression and redundant file elimination. LiveBackup also offers easy to use management tools to give the ability to the administrator to remotely repair malfunctioning systems, create bare-metal disaster recovery images and enforce consistent backup policies.



## MINIMUM SYSTEM REQUIREMENTS

Atempo LiveBackup Client	Atempo LiveBackup Server
Windows 2000 Professional or XP Intel Pentium III processor or higher or AMD Athlon processor 64 MB RAM (128 MB recommended) 100 MB free disk space (500 MB recommended) TCP/IP	Windows 2000 Server or Advanced Server with Service Pack 2 or Windows Server 2003 Standard or Enterprise Edition Intel Pentium Pro processor or higher or AMD Athlon processor or higher 512 MB RAM Microsoft SQL Server 2000 Standard edition with Service Pack 3a 5 GB free disk space TCP/IP Internet Explorer 5.01 SP2 or higher

## ABOUT ATEMPO

Atempo is the leader in trusted information lifecycle management. Atempo's solution enables corporations to protect all their digital assets and secure those assets against tampering and theft over their information lifecycle. Atempo's Time Navigator software suite delivers enterprise-wide secure data protection and storage security, enabling corporations to meet critical business requirements including digital privacy, regulatory compliance, non-repudiated long-term archiving, and business continuity. Founded in 1992, Atempo has more than 2300 customers worldwide, with a sales and support network exceeding 100 resellers. The company's dual headquarters are in Palo Alto, CA, and Paris, France.

Learn more about Atempo and its "Trusted ILM" vision at [www.atempo.com](http://www.atempo.com)



Australia  
Tel: +61 2 9025 3936

Germany  
Tel: +49 (0) 711 67400 330

Korea  
Tel: +82-(0)2-2052-1189

Spain  
Tel: +34 91 788 2617

USA  
Tel: +1 (650) 494-2600

France  
Tel: +33 (0) 1 64 86 83 00

The Netherlands  
Tel: +31 (0) 70 4 16 17 04

Singapore  
Tel: +65 6430 6728

United Kingdom  
Tel: +44 (0) 208 610 6012