



## Preserve Digital Assets Stored in CatDV with Atempo Digital Archive

Atempo Digital Archive is the ideal solution to archive and preserve newly ingested or already edited assets stored in CatDV. Whether you are using the CatDV workgroup or the enterprise edition, Atempo Digital Archive can scale to fit your long-term preservation needs. With Atempo Digital Archive, you can be sure that your media assets are protected at every step of the digital creation process.

### What is CatDV?

CatDV is a cross-platform media asset management tool. It offers highly scalable architecture, powerful logging tools and an intuitive user interface. CatDV is the ideal application to bring order to the mass of media files we all have to deal with on a daily basis.

### Archiving Integrated in the Creative Workflow

While storing your digital assets in a digital asset management tool like CatDV is an essential element of your creative workflow, it cannot be used to retain the assets for the long term. When too much information is stored on primary storage, performance of the production system is affected. If you overload your asset management tool, it can become very challenging to perform basic operations like retrieving an asset.

Coupling Atempo Digital Archive with CatDV is key to enhance your long-term storage strategy. Atempo Digital Archive and CatDV are integrated to make it very easy to move specific assets or finished projects onto nearline or long-term storage. Moving these assets enables you to maximize your storage capacity and optimize the performance of your primary system while ensuring that your finished projects are stored in a safe place and will be recoverable many years later.

Because we understand that the metadata associated with an asset are key elements to keep in the archive, our integration ensures that all the metadata are also captured. When an asset needs to be retrieved, it can easily be done through the CatDV interface or from the Atempo Digital Archive interface by running a search against the metadata of the asset.

### Key Features & Benefits

#### Integration with CatDV

- Archive to tape and/or nearline disk directly from the CatDV interface
- Retrieve directly from the CatDV interface or the Atempo Digital Archive interface
- Metadata archived and indexed with the asset
- Assets not deleted from the archive after retrieval

#### Flexible Archive & Retrieval

- Drag-and-drop user interface for self-service archive and retrieval of media assets
- Automatic migration of files based on predefined policies
- Ability to remove assets from production storage when project is completed

#### Extensive Hardware Compatibility Matrix

- Wide range of disk vendors supported to use as nearline storage
- Wide range of libraries and tape devices supported as long-term deep archive
- Shared file systems such as Xsan and StorNext supported for primary storage

#### Proven Scalability

- No performance bottleneck
- No impact on primary storage or CatDV
- Supports full fiber channel configurations
- Deduplication at the file level

## Digital Workflow Implemented: Atempo Digital Archive & CatDV

### Ingest and Archive Raw Data

In the past, raw data was often neglected and the focus was on archiving the final project. Recent events have shown that raw data can hold invaluable information that might be reused years later. With Atempo Digital Archive, it is very easy to archive the raw data. Simply ingest it into a watch folder and as soon as changes are detected in this folder, the archiving process will be triggered.

### Edit and Archive Project Version

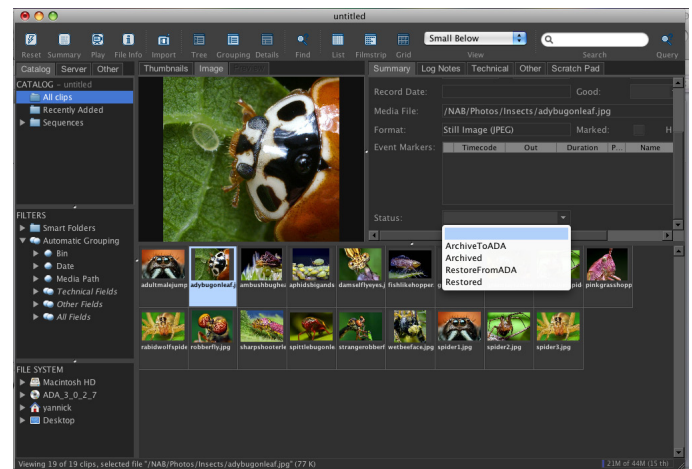
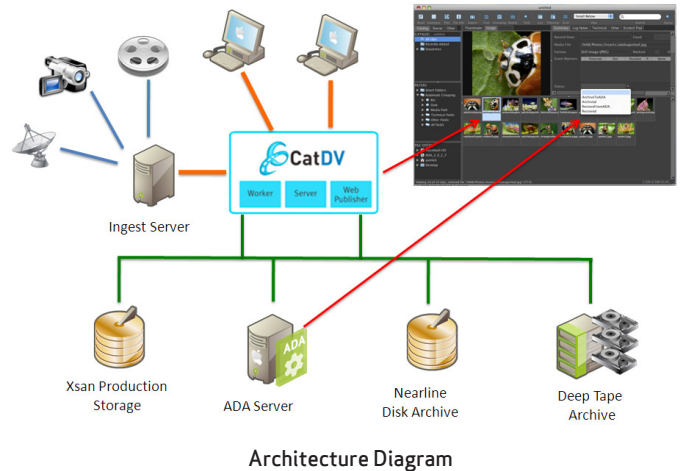
As editors work on a project, they set milestones and often want to save versions of a project at each milestone so they can go back to them later. The archival of project versions is seamless and can be done either from the CatDV GUI or by using the Atempo Digital Archive user interface to drag-and-drop the asset into the archive.

### Finalize and Archive Completed Projects

When a project is completed, it can be archived for long-term preservation to disk or tape storage. The archival can be triggered from the CatDV user interface as well as the Atempo Digital Archive interface. All metadata associated with the final asset will also be captured and archived.

### Retrieve Any Asset at Any Time

Once the assets are archived with Atempo Digital Archive, it is very easy to retrieve them thanks to the advanced indexing that takes place in the back-end. All assets are indexed using their metadata and searches can be done against the metadata. Retrieval is also possible using the CatDV user interface. Even offline assets are displayed in this user interface but marked as "offline". When an offline asset needs to be retrieved, the retrieval can be launched directly from CatDV.



Screenshot of Atempo Digital Archive integrated in CatDV GUI



### About Atempo

Atempo enables organizations to preserve and protect digital information simply and effectively, across any infrastructure, on any platform, over long periods of time. Atempo's comprehensive archiving solutions deliver policy-based and workflow-driven management of rich media files, e-mail and other high-value digital assets to maximize the efficiency and performance of storage systems and reduce long-term storage costs. Atempo's fully-integrated software portfolio also includes backup and recovery of heterogeneous servers, workstations and laptops throughout the enterprise – from the data center to remote offices. Atempo serves thousands of customers around the world through a sales and support network of over 200 resellers and partners.

Learn more at [www.atempo.com](http://www.atempo.com)